

“CHIPMASTER” Fresas de alto rendimento

Fresa de topo para mandril, tipo “CHIPMASTER”, chaveta transversal, corte à direita, hélice à direita ~ 25°

Fresa frontal para mandril, tipo “CHIPMASTER”, chaveta transversal, corte a la derecha y hélice a la derecha ~ 25°

“CHIPMASTER” heavy duty shell end mill, with drive slot, right-hand cut and right-hand helix ~ 25°

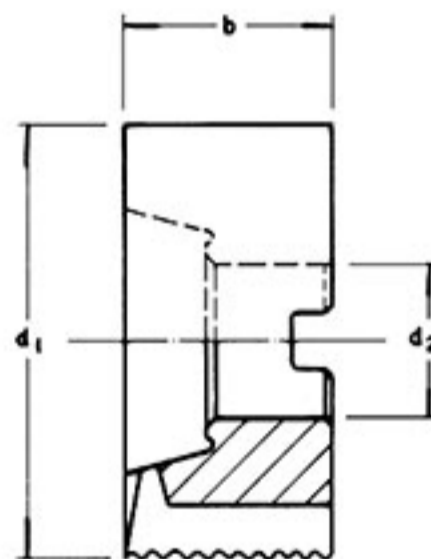
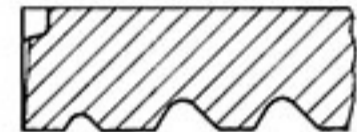
HSS-E (Cobalto)

d1 js 16 mm	b k 16 mm	d2 H7 mm
40	32	16
50	36	22
63	40	27
80	45	27
100	50	32
125	56	40
160	63	50



1015

DIN 1880 - NF
Semi acabamento



1016

DIN 1880 - NR
desbaste



Ex. de especificação: 1015 - 100 x 50 x 32