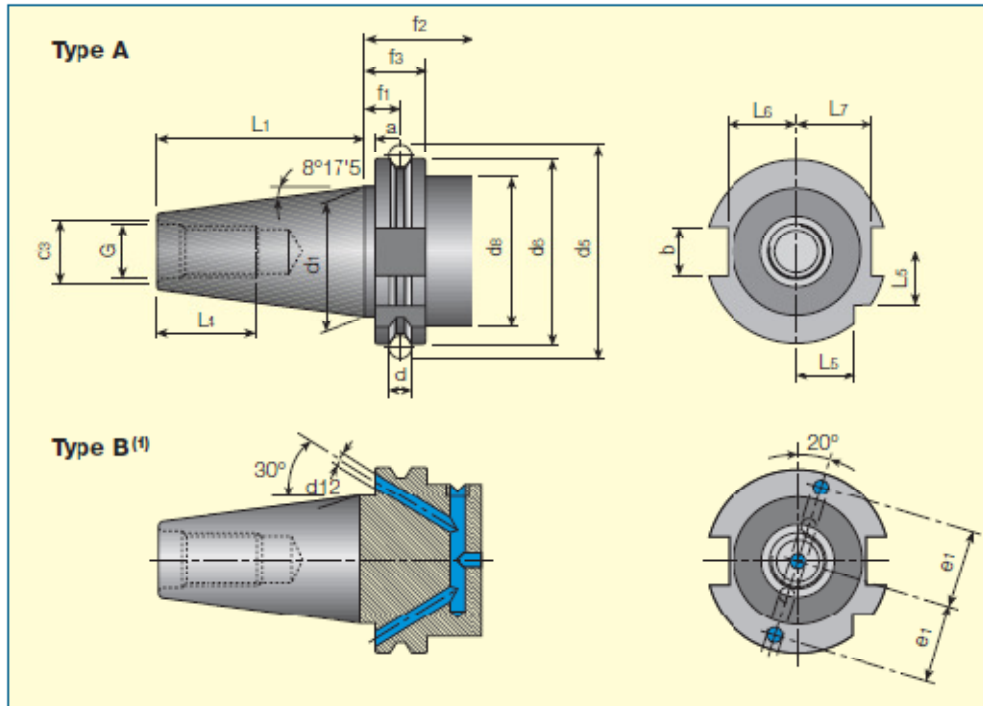


CONE DIN 69871

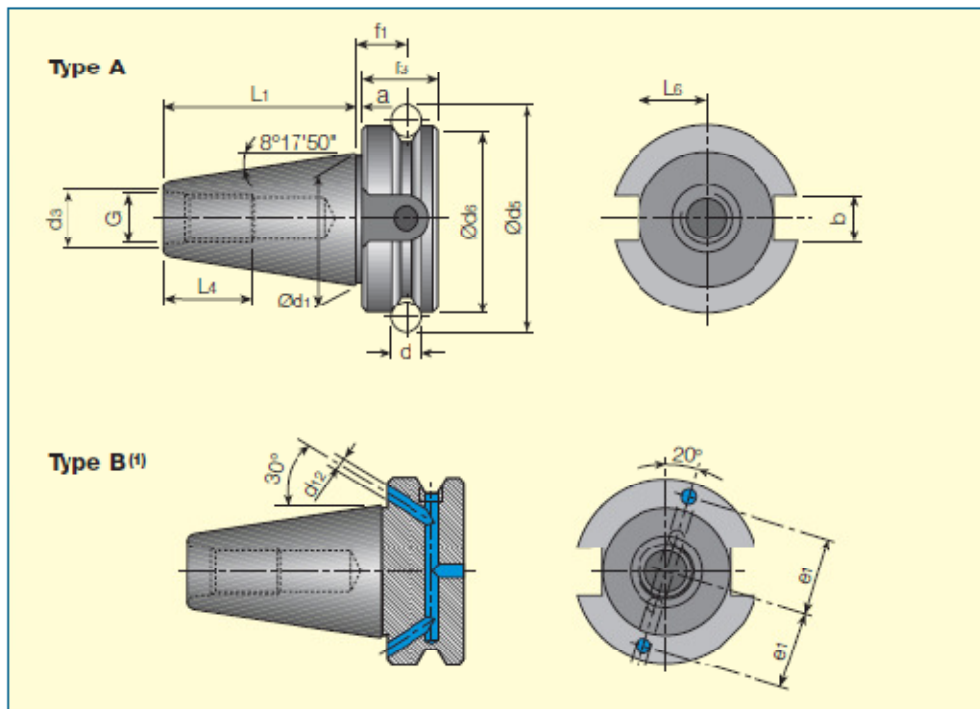


DIN 69871 Form A/B

Shank Taille Aufnahme	a ±0.1	b (H12)	d	d ₁	G	d ₃ (H7)	d ₅ ±0.05	d ₆	d ₈ max	f ₁ ±0.1
SK 30	3.2	16.1	7	31.75	M12	13	59.30	50	45	11.1
SK 40	3.2	16.1	7	44.45	M16	17	72.30	63.55	50	11.1
SK 50	3.2	25.7	7	69.85	M24	25	107.25	97.50	80	11.1

Shank Taille Aufnahme	f ₂ min.	f ₃ -0.1	L ₁ -0.3	L ₄ min.	L ₅ -0.3	L ₆ -0.4	L ₇ -0.4	e ₁ ±0.1	d ₁₂	TAPER AT3 CÔNE Konus AT3
SK 30	35	19.1	47.80	24	15.0	16.4	19.0	21	4	0.002
SK 40	35	19.1	63.40	32	18.5	22.8	25.0	27	4	0.003
SK 50	35	19.1	101.75	47	30.0	35.5	37.7	42	6	0.004

CONE BT MAS-403

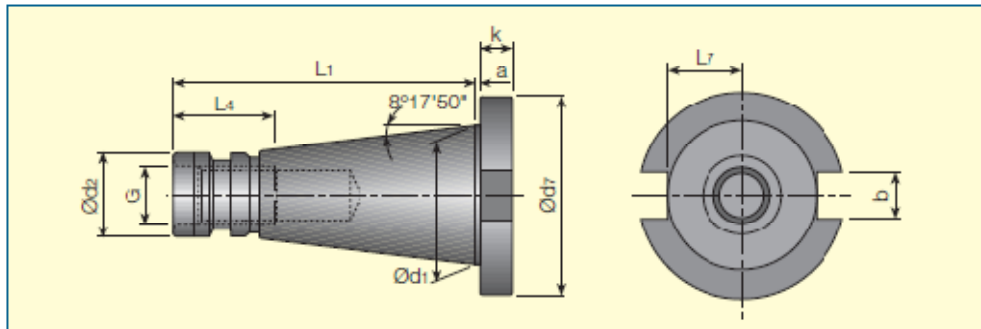


BT MAS – 403

Shank Taille Aufnahme	a	b (H ₁₂)	d	d ₁	G	d ₃ (H ₈)	d ₅	d ₆ (H ₈)	f ₁ ±0.1
BT30	2	16.1	8	31.75	M12	1.5	56.144	46	13.6
DT40	2	16.1	10	44.45	M16	17	75.679	63	16.6
BT50	3	25.7	15	69.85	M24	25	119.020	100	23.2

Shank Taille Aufnahme	F ₃	L ₁ ±0.2	L ₄ MIN	L ₅ -0.2	e1 ±0.1	d ₁₂	TAPER AT3 CÔNE AT3 Konus AT3
BT30	20	48.4	24	16.3	21	4	0.002
BT40	25	65.1	30	22.6	35	4	0.003
BT50	35	101.8	45	35.4	42	6	0.004

CONE DIN 2080



DIN 2080

Shank Taille Aufnahme	a ±0.2	b (H _{r2})	d ₁	d ₂	G	d ₇	K ±0.15
SK 30	1.6	16.1	31.75	17.4	M12	50	8
SK 40	1.6	16.1	44.45	25.3	M16	63	10
SK 50	3.2	25.7	69.85	39.6	M24	97.5	12

Shank Taille Aufnahme	L ₁	L ₄	L ₇ NAX	TAPER AT3 CÔNE AT3 Konus AT3
SK 30	68.4	24	16.2	0.002
SK 40	93.4	32	22.5	0.003
SK 50	126.8	47	35.3	0.004