

Morse Taper Adapter

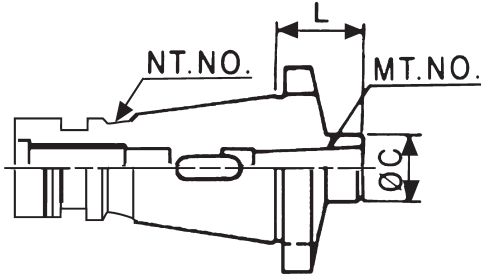
NT-30, 40, 50, R8, MT3, 4



DIN 2080/ISO SHANK



MORSE TAPER ADAPTER WITH STRAIGHT SHANK



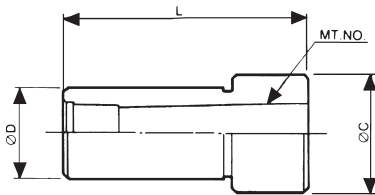
STANDARD TYPE

ORDER NO.	TAPER	TYPE	C	L	WEIGHT (kgs)	CODE NO.
VI-101	NT30	MT1	25	25	0.6	3211-030
VI-102	NT30	MT2	32	50	0.6	3211-031
VI-103	NT30	MT3	35	65	0.7	3211-032
VI-104	NT40	MT1	25	30	0.9	3211-033
VI-105	NT40	MT2	32	30	1	3211-034
VI-106	NT40	MT3	40	70	1.2	3211-035
VI-107	NT40	MT4	50	90	1.5	3211-036
VI-108	NT50	MT2	32	30	2.8	3211-037
VI-109	NT50	MT3	40	30	2.7	3211-038
VI-110	NT50	MT4	50	45	3.2	3211-039
VI-111	NT50	MT5	65	105	3.7	3211-040

PLEASE NOTIFY THE DRAW BAR THREAD SIZE WHEN ORDERING.

STANDARD TYPE

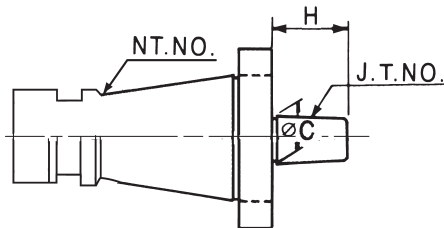
ORDER NO.	TAPER	SIZE	D	MT NO	C	L	WEIGHT (kg)	CODE NO.
VI-131	C20	C20-MT1	20	MT1	27	60	0.2	3211-060
VI-132	C20	C20-MT2	20	MT2	27	70	0.2	3211-061
VI-133	C25	C25-MT1	25	MT1	33	60	0.3	3211-062
VI-134	C25	C25-MT2	25	MT2	33	70	0.2	3211-063
VI-135	C25	C25-MT3	25	MT3	33	90	0.2	3211-064
VI-136	C32	C32-MT1	32	MT1	37	60	0.4	3211-065
VI-137	C32	C32-MT2	32	MT2	37	70	0.4	3211-066
VI-138	C32	C32-MT3	32	MT3	37	90	0.4	3211-067



Jacobs Taper Drill Chuck Arbor

NT30, 40, 50-JT & B

DIN 2080/ISO SHANK



ORDER NO.	TAPER	JT NO	C	H	WEIGHT (kgs)	CODE NO.
VJ-103	NT30	JT6	17.17	26	0.6	3209-092
VJ-106	NT40	JT6	17.17	26	1	3209-095
VJ-109	NT50	JT6	17.17	26	3.2	3209-098
VJ-111	NT30	B16	15.733	24	0.5	3209-099
VJ-112	NT40	B16	15.733	24	1	3209-100

PLEASE NOTIFY THE DRAW BAR THREAD SIZE WHEN ORDERING.

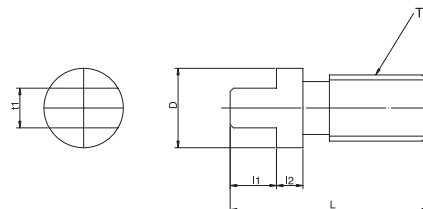
Tang For Morse Taper Shank

SURFACE TREATMENT: BLACKENING

HRC 45°



NEW



Tang for draw bar thread type to tang type



ORDER NO.	D	L	11	12	T	t1	WEIGHT	CODE NO.
VMT-2M	12	30	7	4	M10X1.5	6	0.02	3209-201
VMT-3M	17	40	12	4	M12X1.75	7.5	0.04	3209-202
VMT-4M	24	46	13	5	M16X2	11.5	0.09	3209-203
VMT-5M	34	47	14	5	M24X3	15.5	0.18	3029-204