

**1 SCALE 0.01mm**  
**0.02mm per Ø**

Here is a small head that will be in constant demand in any shop.

Note the wide base bearing surface that assures maximum rigidity even when the bar holder is in an off-set position. This wide base design is a recent Criterion innovation that increases bearing surfaces by 50% over the older models.

A choice of either 3/8" or 1/2" double hole bar holder with a 1/2" cross hole is available.

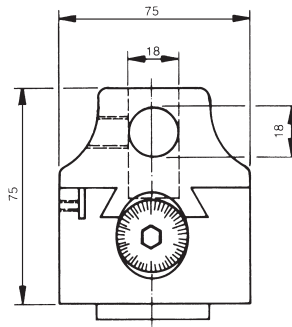
The unit has a 7/8"-20NC threaded back and also features a direct reading dial screw.

ORDER NO. VBC-2

## SPECIFICATION

BORING CAPACITY Ø10-Ø100

| ORDER NO. | ACTUAL SIZE | OVERALL LENGTH | BORING BAR HOLE SIZE | CENTER DIST BETWEEN HOLES. | CROSS HOLE DIA | OFFSET | WEIGHT (kg) | CODE NO. |
|-----------|-------------|----------------|----------------------|----------------------------|----------------|--------|-------------|----------|
| VBC-2(m)  | 50          | 62             | 12                   | 15                         | 12             | 15     | 0.8         | 3401-302 |



**1 SCALE 0.01mm**  
**0.02mm per Ø**

Here is a sturdy unit of extended boring range, capable of peeling off heavy roughing cuts as well tool of extreme sensitivity. The use of a wide-base barholder resting securely on the body, eliminates the need for a separate side plate. You will notice it has now become an integral part of the body.

The direct reading adjusting screw is ground after hardening and a plainly marked dial face in non-reflecting satin chrome allows easy reading and adjustments of .0005 or less.

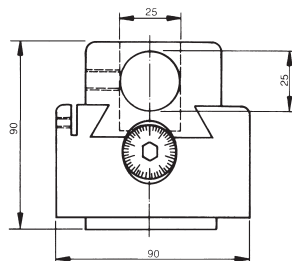
All Criterion Boring Heads have threaded backs for use with a variety of shanks. This model takes a 1-1/2"-18 threaded shank.

ORDER NO. VBC-3

## SPECIFICATION

BORING CAPACITY Ø10-Ø220

| ORDER NO. | ACTUAL SIZE | OVERALL LENGTH | BORING BAR HOLE SIZE | CENTER DIST BETWEEN HOLES. | CROSS HOLE DIA | OFFSET | WEIGHT (kg) | CODE NO. |
|-----------|-------------|----------------|----------------------|----------------------------|----------------|--------|-------------|----------|
| VBC-3(m)  | 75          | 80             | 18                   | 23                         | 18             | 25     | 2           | 3401-304 |



**1 SCALE 0.01mm**  
**0.02mm per Ø**

This is a bigger boring head which can be put on a large machine to process more as you want. The radius of boring hole can reach on about Ø 400mm long by a boring bar of 160mm.

All Criterion Boring Heads have threaded backs for use with a variety of shanks. This model takes a 1-1/2"-18 threaded shank.

## SPECIFICATION

BORING CAPACITY Ø10-Ø250

| ORDER NO. | ACTUAL SIZE | OVERALL LENGTH | BORING BAR HOLE SIZE | CENTER DIST BETWEEN HOLES. | CROSS HOLE DIA | OFFSET | WEIGHT (kg) | CODE NO. |
|-----------|-------------|----------------|----------------------|----------------------------|----------------|--------|-------------|----------|
| VBC-4(m)  | 100         | 90             | 25                   | 32                         | 25             | 25     | 4           | 3401-306 |