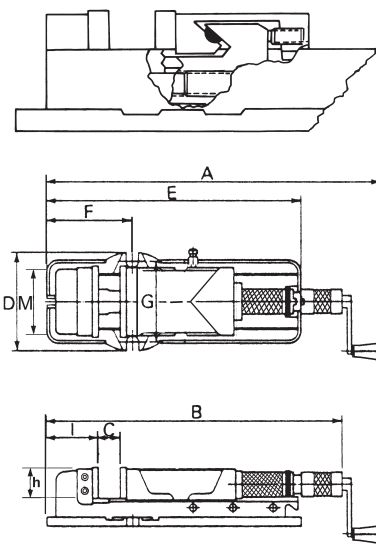


Build Out Type



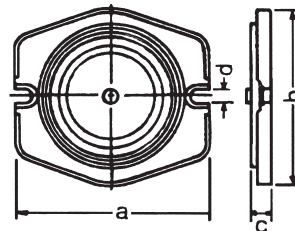
Features

- Rigid material-vice body of ductile iron FCD 60JIS (equal to GGG 60) with 60 kgs/mm² or 80,000 psi tensile strength.
- Vice bed flame hardened to HRC 45 and up, takes up wear and maintain accuracy for long.
- For multiple use plural vises are available on tolerance of 0.01mm in the height of vise bed and in alignment of the clamping surface of the vise jaw at extra cost.
- Mechanical/hydraulic spindle without original clutch mechanism.
- Down thrust "Semi-sphere Segment" mechanism-eliminates jaw lifting and work flitting.
- All surface ground.
- Same height by request.



ORDER NO.	A	B	C OPEN	D	E	F	G	I	M	h	Max. Clamp Force (kgf)	N.W. (kgs)	CODE NO.
VHO-5	695 920	570 795	0-220	190	505	180	160	105	130	55	3500	36.5	1002-220
VHO-6	750 1060	625 935	0-300	240	625	208	196	125	160	58	4000	59.1	1002-221
VHO-8	830 1140	725 1035	0-310	280	700	265	240	165	200	63	5000	94.3	1002-228

Swivel Base Optional



ORDER NO.	A	B	C	D	N.W. (kgs)	CODE NO.
HSO-5	285	263	35	16	12.5	1002-222
HSO-6	330	320	40	18	16.5	1002-223
HSO-8	415	413	50	21	35	1002-229

Double Clamp Vice

NEW DESIGN & UNIQUE CONSTRUCTION.
EXCLUSIVELY DESIGNED WITH COMBINATION OF MACHINABLE FIXTURE JAWS AND HARD JAWS

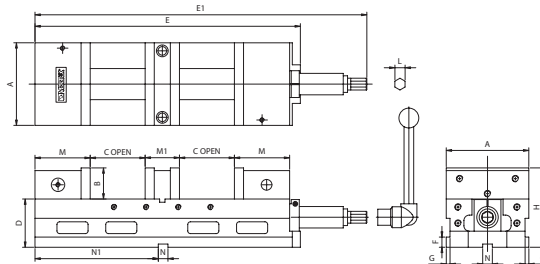
HIGH & EXCELLENT RIGIDITY.

- The vise is made of FCD. 80000 PSI(55 kg/cm²) Ductile iron, and the slide ways are hardened to HRC45. The rigid construction prevents the base from distortion.
- Precision made to high accuracy standard.
- The movable jaws provide alignment to workpiece without jaw lifting.
- The height of jaw plate is 30% higher than the other vise with the same size.
- There are 6 kinds of clamping ways to meet workpieces of different shapes and sizes.



DOUBLE CLAMP SEAT:

One handle can simultaneously operate two movable jaws and clamps 2 pieces of workpiece of same size or different size & one large workpiece. This model can increase efficiency and productivity of CNC machine.



ORDER NO.	A	B	C OPEN	D	E	E1	F	G	H	L	M	M1	N	N1	N.W.(KG)	CODE NO.
VMC-6D	154	58	33-100	90	495	620	19	7	148	19	103	64	18	230	62.1	4005-021